

State of Wyoming Corner Record

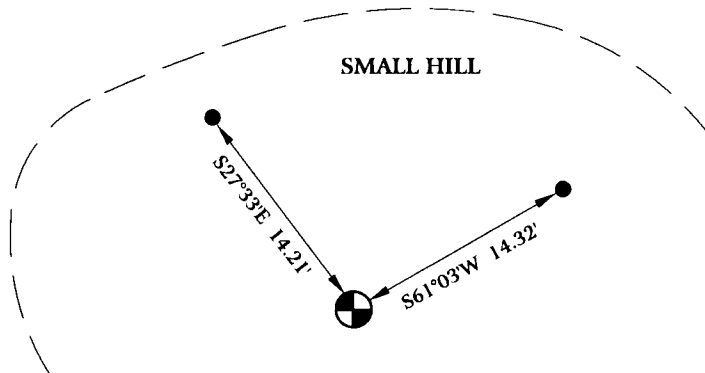
(In compliance with the CORNER PERPETUATION AND FILING ACT, Wyoming Statutes, 1997 Section 33-29-140 et. seq., and the Rules and Regulations of the Board of Professional Engineers and Professional Land Surveyors)

Reverse side of this form may be used if more space is needed.

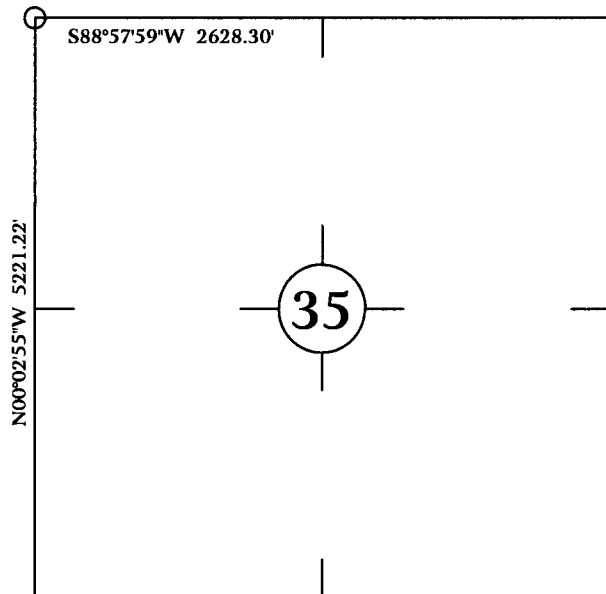
Record of original survey and citation of source of historical information (if corner is lost or obliterated). Description of corner monumentation evidence found and/or monument and accessories established to perpetuate the location of this corner. Sketch of relative location of monument, accessories, and reference points with course and distance to adjacent corner(s) (if determined in this survey). Method and rationale for reestablishment of lost or obliterated corner.

ORIGINAL CALL FOR 18" X 10" X 10" GRANITE BOULDER.

FOUND 12" X 10" STONE FIRMLY SET 12" EXPOSED WITH ONE NOTCH ON SOUTH, AND TWO NOTCHES ON EAST.
SET TWO 5/8" X 24" REBARS WITH 1 1/2" ALUMINUM CAPS P.L.S. 6099 FOR TIES.

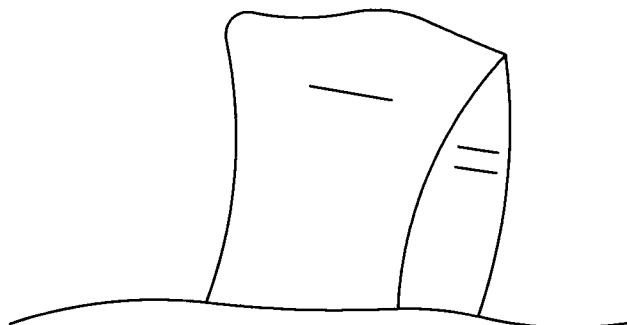


Monument location



ALL TIES ARE 5/8" X 24" REBAR
W/ 1 1/2" ALUMINUM CAP. P.L.S. 6099

Monument Inscription



SOUTH AND EAST FACE
OF 12" X 10" STONE

Date of Field Work: April 7, 2005

Office Reference: GALLEGOS05.pro

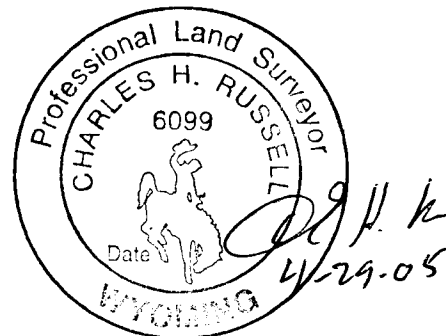
Cross Index Plat

1	2	3	4	5	6	7	8	9	10	11	12	13	14	15	16	17	18	19	20	21	22	23	24	25		
A																									A	
B																									B	
C	6	5	4	3	2	1																			C	
D																										D
E																										E
F																										F
G	7	8	9	10	11	12																				G
H																										H
I																										I
J																										J
K																										K
L	18	17	16	15	14	13																				L
M																										M
N																										N
O																										O
P	19	20	21	22	23	24																				P
Q																										Q
R																										R
S																										S
T	30	29	28	27	26	25																				T
U																										U
V																										V
W																										W
X	31	32	33	34	35	36																				X
Y																										Y
Z																										Z
	1	2	3	4	5	6	7	8	9	10	11	12	13	14	15	16	17	18	19	20	21	22	23	24	25	

Firm/Agency, Address
CHARLES H. RUSSELL P.L.S. 6099
AMERICAN WEST LAND SURVEYING CO.
29 SOUTH 4TH AVENUE
BRIGHTON, CO 80601

This corner record was prepared
by me or under my direction
and supervision.
SEAL & SIGNATURE

Telephone Number:
303-659-1532



Corner Name: Northwest Corner, Section 35, T 13 N, R 69 W, 6th P.M.

Cross-Index No.: V-17

County: Laramie

SBRPEPLS/PLSW: March 1994; PLSW January 1998

RECORDED 6/22/2005 AT 12:37 PM REC# 420253 BK# 1888 PG# 1123
DEBRA K. LATHROP, CLERK OF LARAMIE COUNTY, WY PAGE 1 OF 1